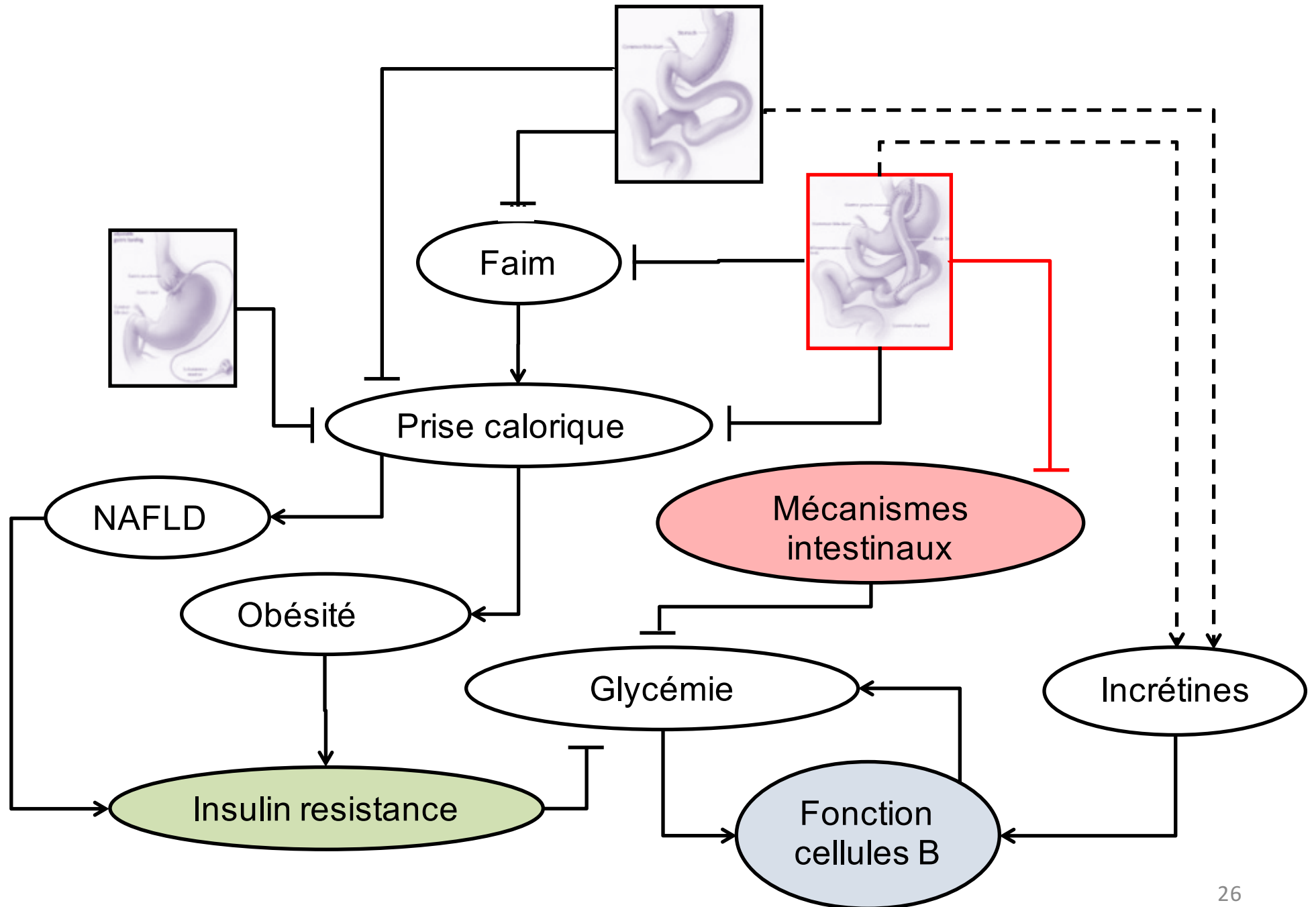
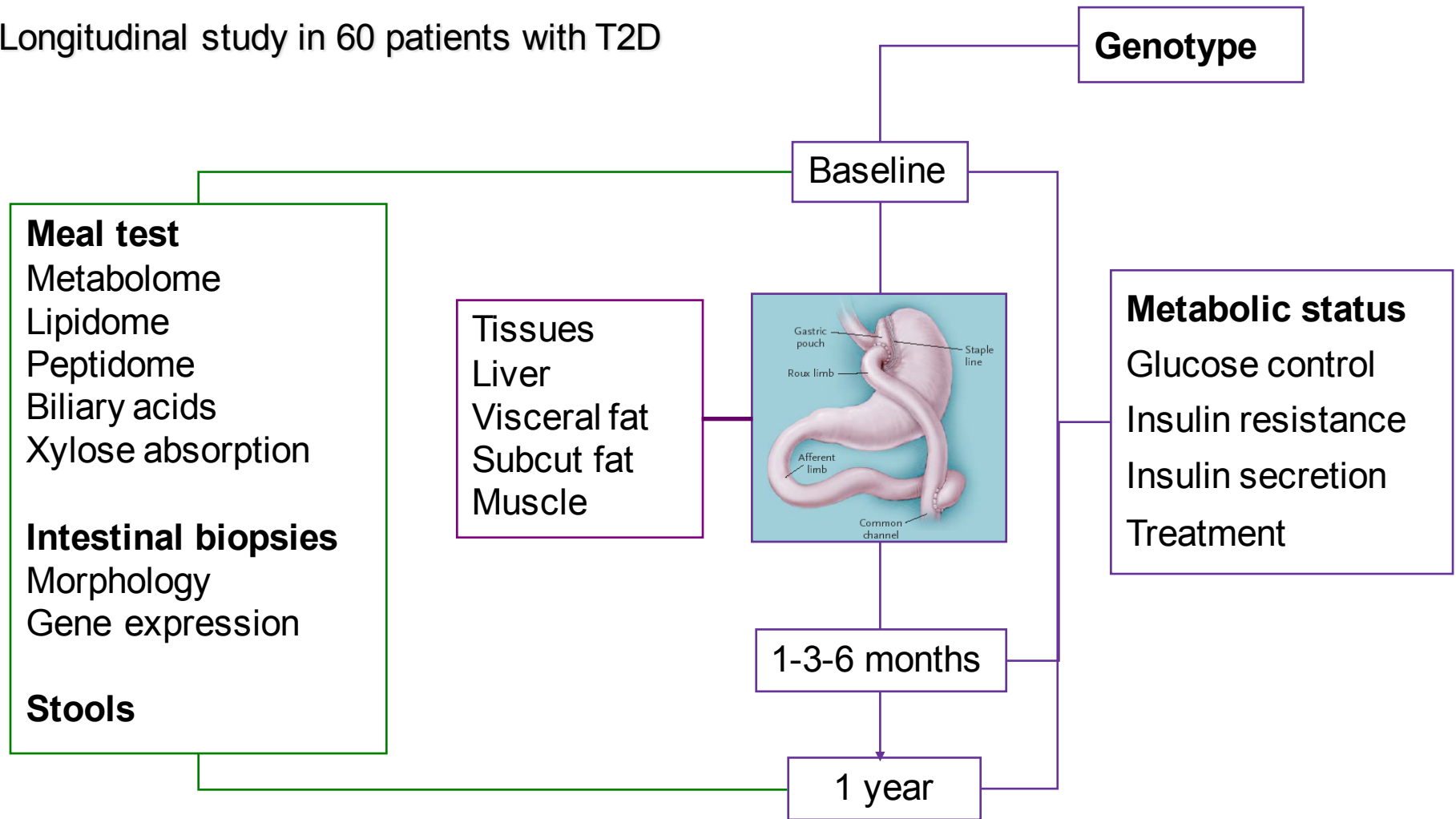


Mécanismes ?



Etude clinique

Longitudinal study in 60 patients with T2D



CNIL - CPP - ANSM agreement (CP/06/49)

ABOS study (ClinGov NCT 01129297)

Collaborations

Endocrine and Metabolic Surgery

Robert Caiazzo
Fanelly Torres
Violeta Raverdy
Gregory Baud
Sarah Surmont
Shirley Balick

INSERM UMR 1190

Julie Kerr-Conte
Thomas Hubert
Valery Gmyr
Mehdi Daoudi
Audrey Quenon



EGID

Philippe Froguel
Stephaen Cauchi
Loic Yengo
Bart Staels
Sophie Lestavel
Anne Tailleux

Diabetology

Pierre Fontaine
Marie Christine Vantyghem



INRIA

Guillemette Marot

Nutrition

Monique Romon
Marie Pigeyre
Helene Werkindt

External collaborations

Andrea Mari
Gema Fruhbeck